

# Aspaara Algorithmic Solutions AG

## Algorithmic Solutions for Intelligent Planning



### **Aspaara Algorithmic Solutions AG**

Technoparkstrasse 1, CH-8005 Zürich

Company Registration: CHE-197.11.469

**Dr. Alexander Grimm | CEO Aspaara**

[alexander.grimm@aspaara.com](mailto:alexander.grimm@aspaara.com)

[www.linkedin.com/in/alexander-grimm](https://www.linkedin.com/in/alexander-grimm)

**aspaara**  
algorithmic solutions

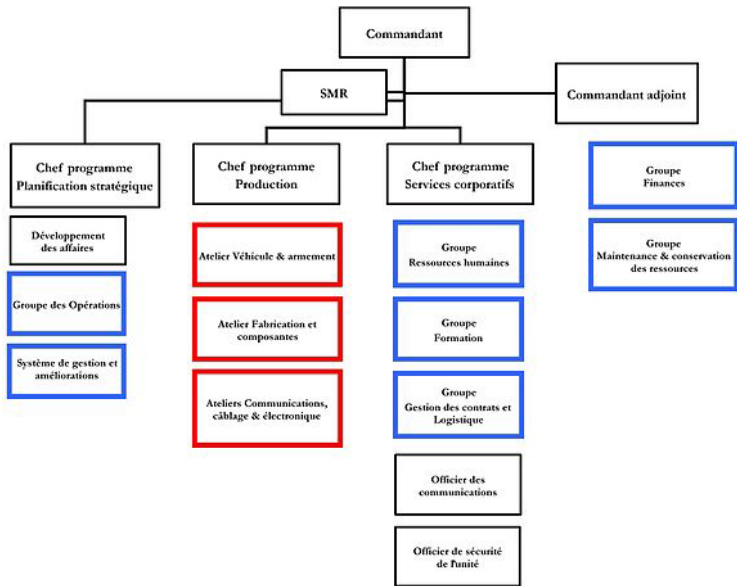
[www.aspaara.com](http://www.aspaara.com)

A member of



# The Today's Working World

Increasingly Dynamic and Complex



20<sup>th</sup> century



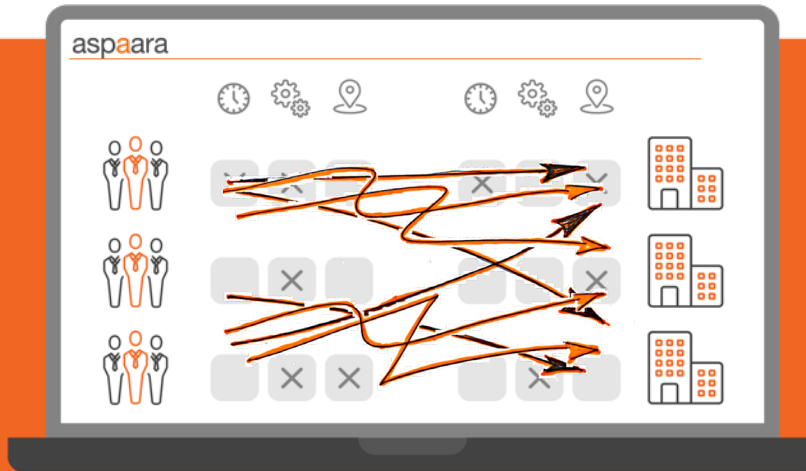
21<sup>th</sup> century

# Challenge: Resource Planning

A highly Complex, Dynamic, and Constant Challenge

## Employees

- Availability
- Job function
- Skill set
- Preferences
- Location
- ...



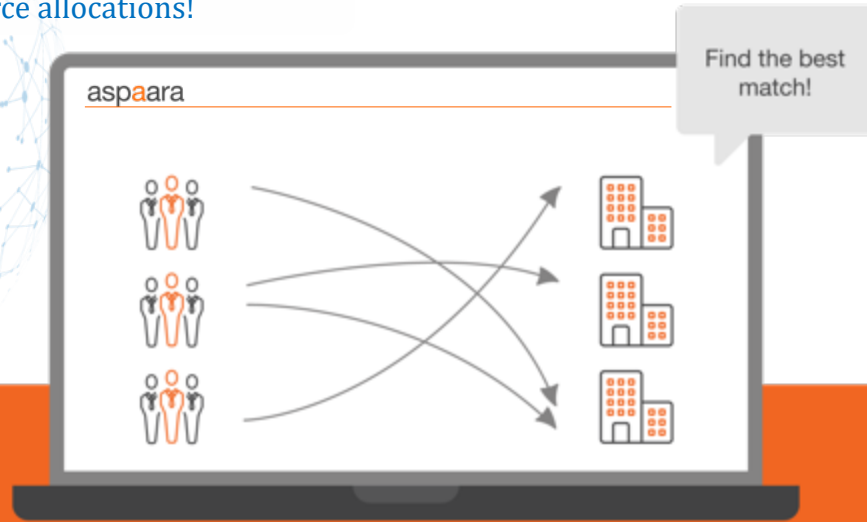
## Tasks

- Dates
- Jobs
- Skills
- Preferences
- Locations
- ...

# Solution: Aspaara<sup>®</sup> MatchingCore™

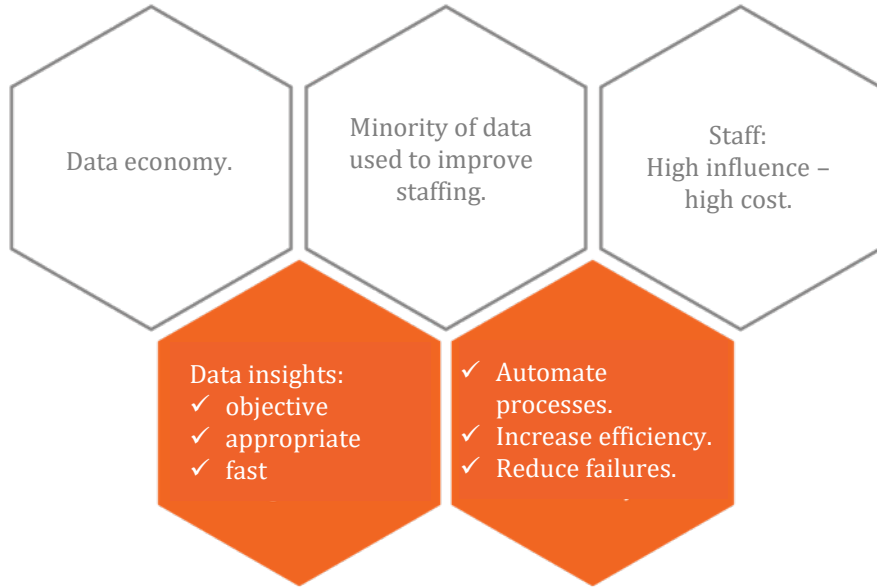
## Central Resource Management With Intelligent Optimization Engine

Artificial Intelligence and Machine Learning for finding optimal resource allocations!



# Mission: Accelerate Planning for Tomorrow!

Improve Resource Planning in the Era of Unprecedented Data Growth



“Algorithmic Solutions for Intelligent Planning“

Aspaara® Groundcloud®

Vebego ground.net AAS  
Your gateway to local experts  
airline assistance  
switzerland

coople ShAir ...and more

Aspaara® SmartWork™

Zürcher Hochschule für Angewandte Wissenschaften  
Schweizerische Eidgenossenschaft  
Confédération suisse  
Confederazione Svizzera  
Confederaziun svizra  
Swiss Confederation  
Innosuisse – Swiss Innovation Agency

pwc zhaw ...and more

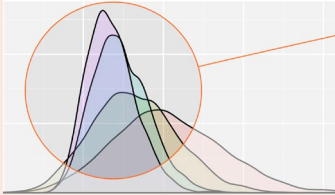
Aspaara® SmartIndustry™

smartrail4.0 TEMAS SBB CFF FFS  
Empowered to act Released to achieve  
data service Swiss Alliance for Data-Intensive Services  
...and more

# Aspaara<sup>®</sup> MatchingCore<sup>™</sup> Technology

Accurate Demand Forecasting and Customized Optimization

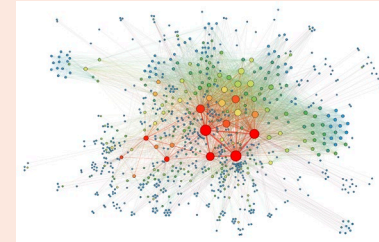
## Demand Forecasting



- ✓ Accurate
- ✓ 100% Data-Driven
- ✓ Adaptive



## A.I. Optimization



- ✓ Self-Learning
- ✓ Individualized
- ✓ Fast and Flexible

# Benefits: Aspaara<sup>®</sup> MatchingCore<sup>™</sup>

Direct Savings & Process Optimization For Our Clients



Reduce unnecessary  
travel time!

MatchingCore<sup>™</sup>  
reduces up to **25%**  
unnecessary travel  
costs.



Reduce **over-**  
booking!

MatchingCore<sup>™</sup>  
identifies up to **6% of**  
wrongly allocated  
labour costs.



Optimize **team**  
composition!

MatchingCore<sup>™</sup>  
finds the **best-**  
matching teams.



Increase **employee**  
satisfaction!

MatchingCore<sup>™</sup>  
respects **individual**  
working preferences.

# Successful Deployment: 3 Use Cases

## Overview Over 3 Selected Use Cases And Their Impact



- **Challenge:** Aircrafts never come or leave in scheduled time. Demand forecast and workforce allocation is difficult.

- **Impact:** Aspaara saved labour costs of **6.8%** in a long-term study over 10 months.

[Read Success Stories: Airline Assistance Switzerland AG](#)

- **Challenge:** Specification, development and implementation of the new central resource management tool for all Swiss offices of PwC.

- **Impact:** Aspaara guarantees that employees are on the right mandates at the right time with the right skills **for all 15 offices** of PwC CH and Liechtenstein.

[Read Success Stories: PricewaterhouseCoopers AG](#)

- **Challenge:** Timetable planning of Swiss Federal Railways reaches its limits. They search for a completely new planning algorithm.

- **Impact:** Aspaara surpassed over 400 IT expert teams in a **global competition** (2nd rank) by reducing average delays down to 1.5sec per train.

[Read Success Stories: SBB Challenge](#)



# Benefits: Aspaara® MatchingCore™

What Do Our Clients Say?

"The Aspaara MatchingCore has been productive and **continuously improving** over the last **four years**. It has improved our resource planning process according to multiple KPIs, saving us inter alia **thousands of travel hours** due to travel time optimisation."

Assurance Partner  
PricewaterhouseCoopers



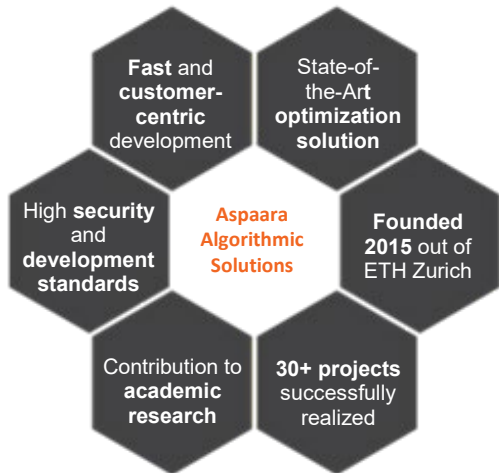
COO  
Airline Assistance  
Switzerland AG



"Only 4% of all flights are in time, all others are either too early or too late – **mixing up our static planning entirely**. Aspaara makes **accurate demand forecasts** by utilizing a variety of data sources. Matching supply with demand became an easy job!"

# Aspaara<sup>®</sup> Management Team

Data-Driven Optimization & Algorithmic Solutions



Headquarter  
Technopark<sup>®</sup> Zürich  
Technoparkstrasse 1  
8005 Zürich, Switzerland



## Dr. Alexander Grimm | CEO



- MSc ETH in **Physics**.
- PhD in **Business Administration**.
- 6+ y **data science** and **data analytics**.
- 4+ y **fast prototyping**.
- 3+ y **computational intelligence** algorithms.
- Focus: Data analytics, customer relations, and business development.

## Dr. Kevin Zemmer | CTO



- MSc ETH in **Applied Mathematics**.
- PhD ETH in **Applied Mathematics**.
- 7+ y **optimization algorithms**.
- 5+ y **software development**.
- Focus: Development of Optimization solutions and IT infrastructure.

### Contact

Dr. Alexander Grimm  
[alexander.grimm@aspaara.com](mailto:alexander.grimm@aspaara.com)  
+41 (0) 76 448 20 91

Technoparkstrasse 1  
CH-8005 Zürich  
[info@aspaara.com](mailto:info@aspaara.com)



[aspaara-algorithmic-solutions-ag](https://www.linkedin.com/company/aspaara-algorithmic-solutions-ag)



[@aspaara](https://twitter.com/aspaara)